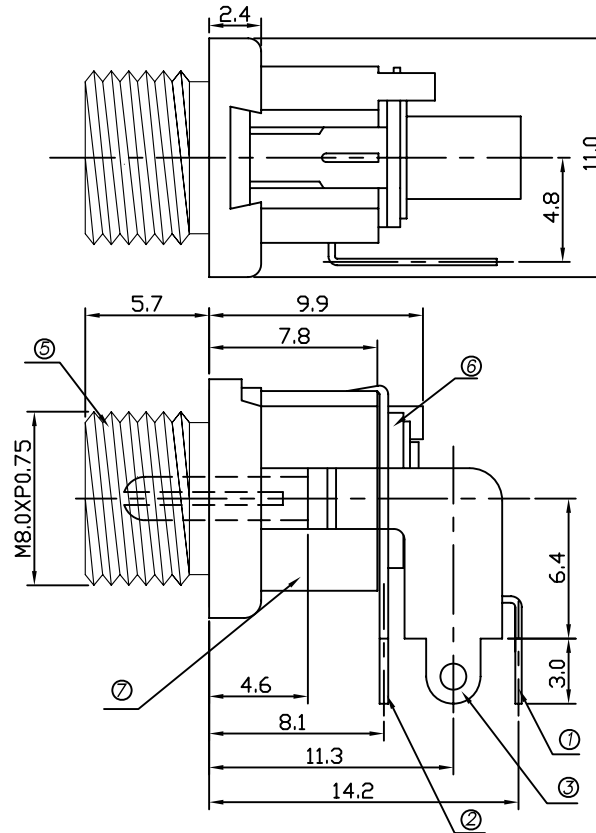
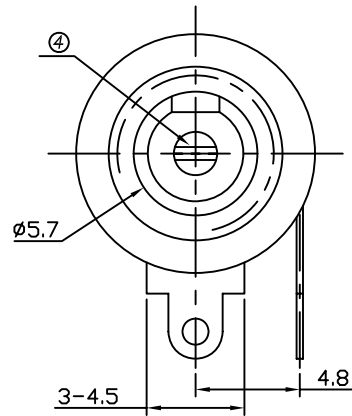
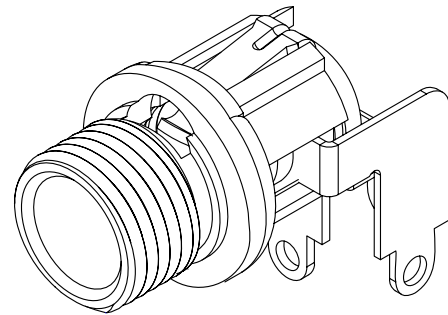
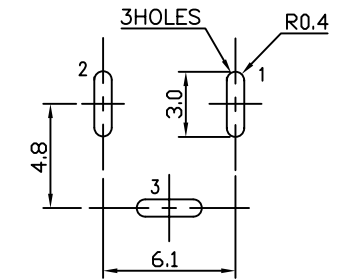


* REVISIONS				
LTR	DESCRIPTION	DATE	REVISED	APPROVED

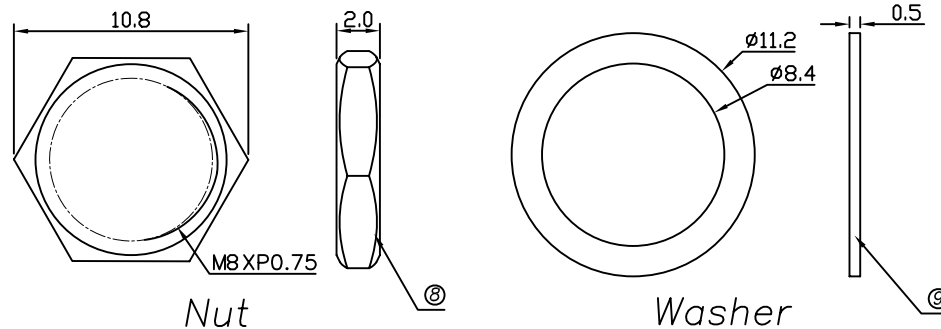


CAT NO.	PIN	SCHEMATIC
SHD-2026R	Ø2.0	



T:1.6 Dimensions of PC board holes
Tolerance : ± 0.05 (Printed-Top view)

LEAD FREE



Nut

Washer

UNLESS OTHERWISE SPECIFIED, TOLERANCE ON DECIMAL: ± 0.3

9	WASHER	1	H59(COPPER ALLOY)	Ni	PLATED
8	NUT	1	H59(COPPER ALLOY)	Ni	PLATED
7	HOUSING	1	PBT 4815	UL-94V0(BLACK)	
6	INSULATOR	1	PF		
5	AXIS SUPPORT	1	H59(COPPER ALLOY)	Ni	PLATED
4	PIN	1	H59(COPPER ALLOY)	Ni	PLATED
3	SHUNT TERMIANL	1	C2680	Sn	PLATED
2	TIP SPRING	1	C5191	Sn	PLATED
1	CENTER PIN TERMINAL	1	C2680	Sn	PLATED
LTR	PART NAME		QTY	MATERIAL	
REMARK					
DWN	LILY	DATE	2013.04.03	3RD ANGLE PROJECTION	NAME DC POWER JACK
CHKD	ANDY	DATE	2013.04.03		CAT. NO.
APVD	JON	DATE	2013.04.03		UNIT: mm
SWEETA PRODUCTS CORPORATION					DWN.NO. SHD-2026-R 001