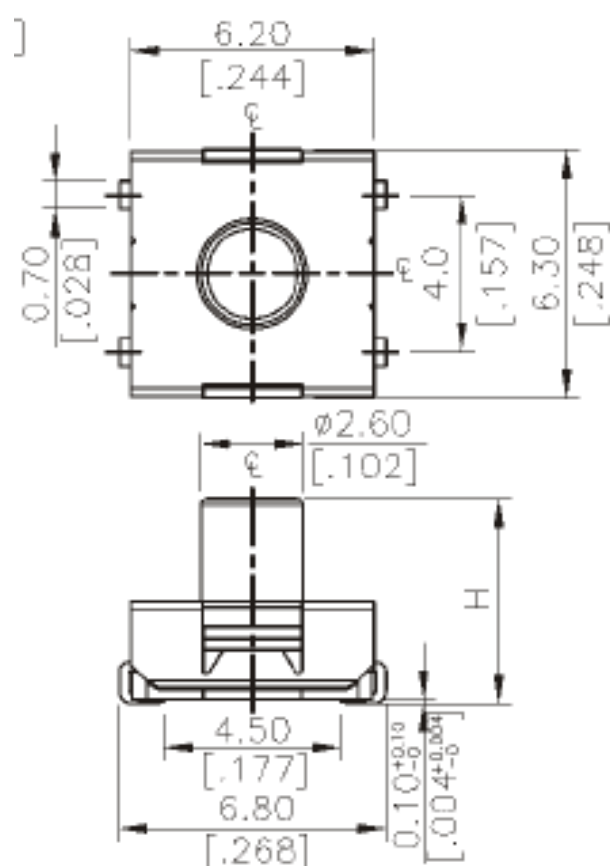


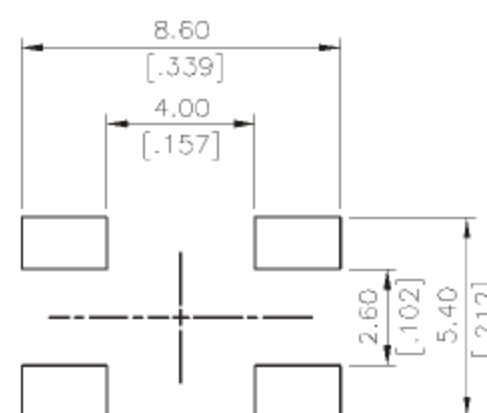
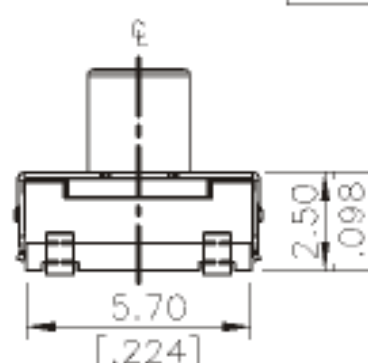
## SDTSJW□-6 SERIES

### DIMENSIONS

#### SDTSJW□-6



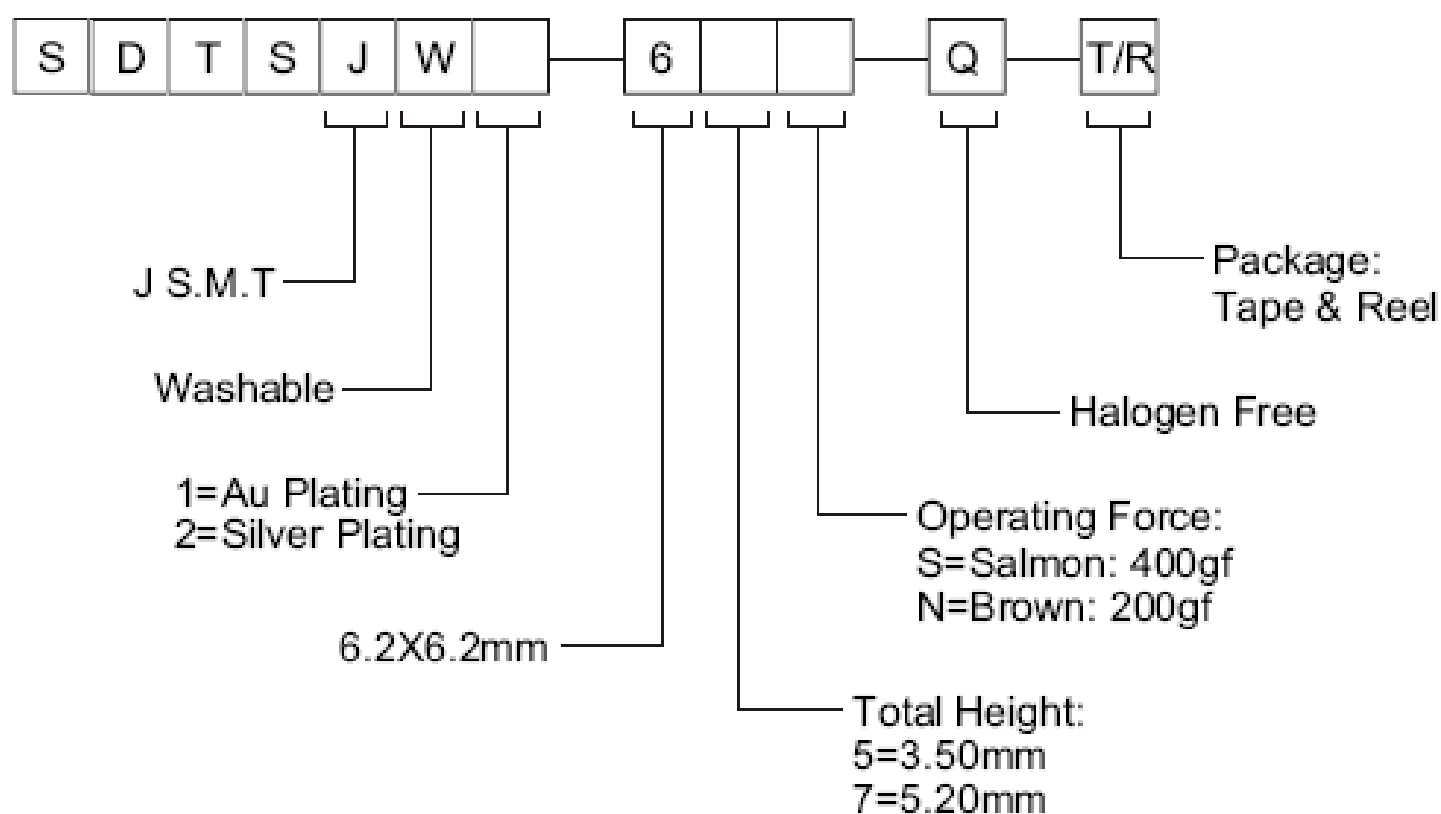
SDTSJW□-67	5.20 [0.205]
SDTSJW□-65	3.50 [0.138]
PART NO.	H



P.C.B. LAYOUT

General Tolerance :  $\pm 0.2\text{mm}$

### HOW TO ORDER



**SPECIFICATION**

**△MECHANICAL**

Operation Force:  
400± 100gf, Salmon (S)  
200± 50gf, Brown (N)  
Stop Strength: Max 3kgf vertical static load continuously  
for 15 seconds  
Stroke: 0.60±0.2mm, S  
0.40±0.2mm, N

Operation Temperature: -40℃ to +85℃  
Storage Temperature: -40℃ to + 85℃

**△ELECTRICAL**

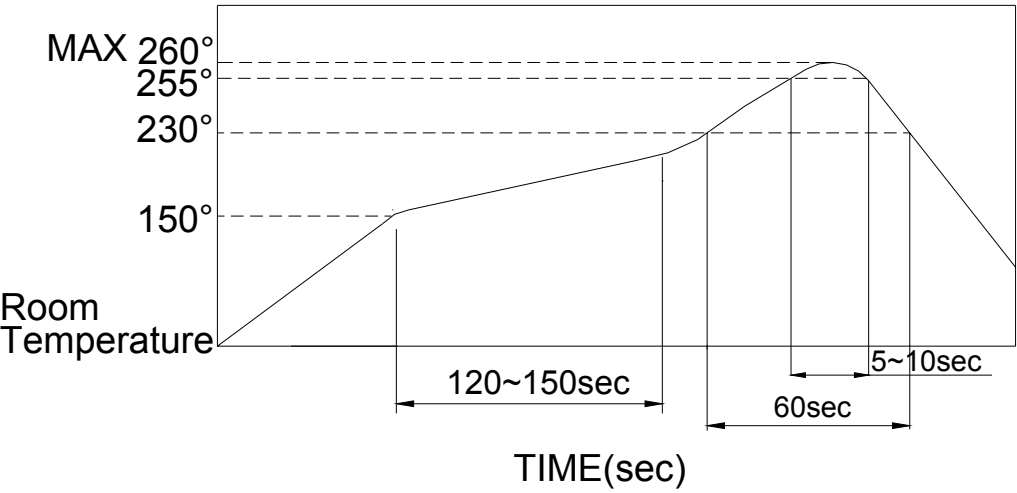
Electrical Life:  
300,000 cycles  
Rating: 50mA, 12VDC  
Contact Resistance: 100mΩ max.  
Insulation Resistance: 100MΩ min. at 500VDC  
Dielectric Strength: 250VAC/ minute  
Contact Arrangement: 1 pole 1 throw

**MATERIAL**

△COVER: Stainless steel  
△TERMINAL: Brass with silver plated  
△BASE: UL94V-0 Nylon High-Temp. Thermoplastic  
Color: Black  
△STEM : Silicon Rubber Color : Brown (200gf)  
△CONTACT: Stainless steel

SOLDERING PROCESS

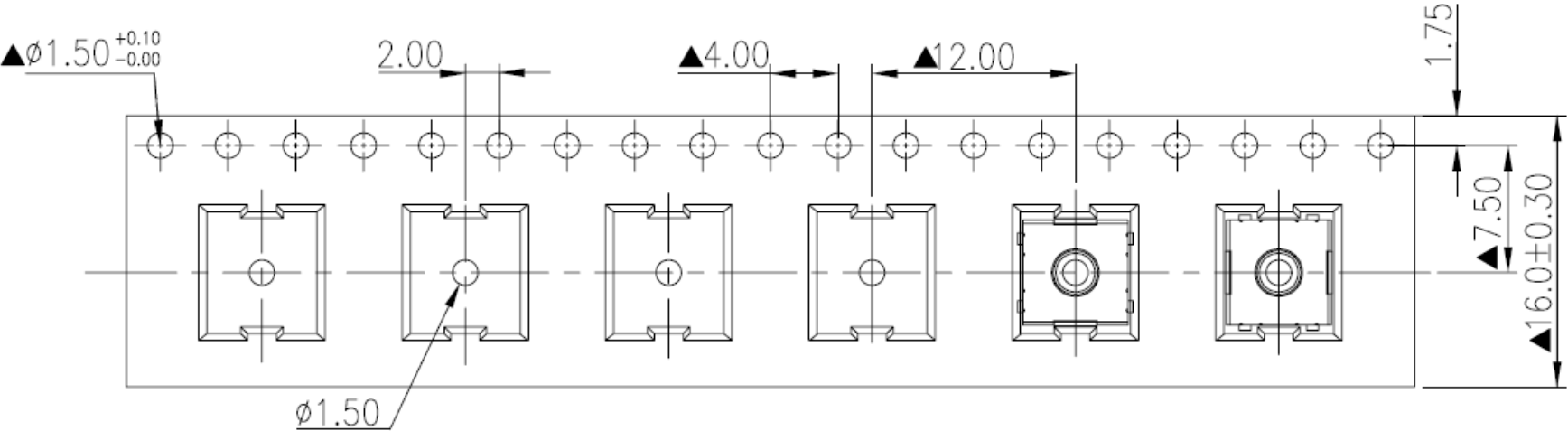
- △HAND SOLDERING : Use a soldering iron of 30 watts, controlled at 350℃ approximately max 5 seconds while applying solder.
- △SOLDERING : Vapor phase & reflow soldering can be applied
- △ Temperature Profile:



PACKING

Part Number	Number Per Tube	Number Per Reel
DTSJW□-6		900

REEL



General Tolerance : ±0.1mm