

喜威達企業股份有限公司

SWEETA PRODUCTS CORPORATION

STS-Series Illuminated Tact Switches

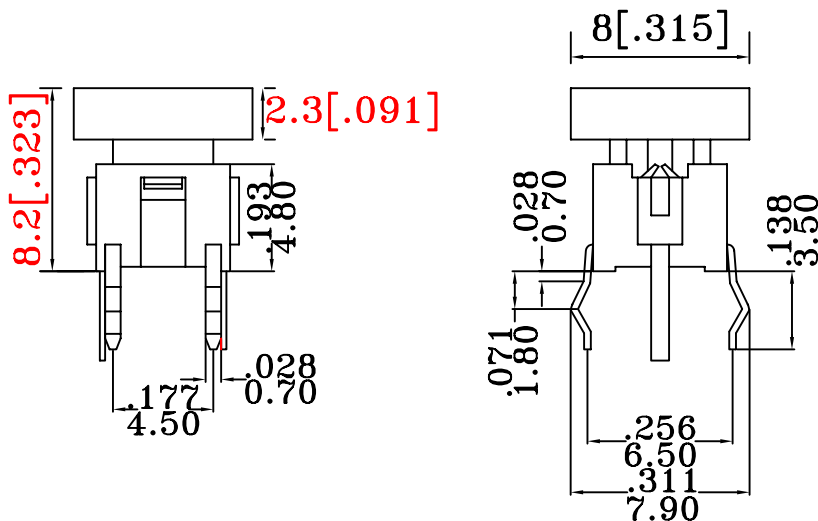
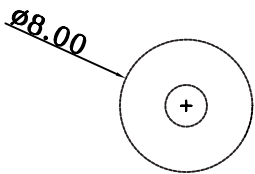
SPECIFICATION

- 1.RATING:12 VDC 50mA
- 2.Operating force:160gf±30gf
- 3.Life:100,000 cycles Min
- 4.Total travel:0.25mm±0.2mm
- 5.Contact resistance:100m ohms Max(initial)
- 6.Insulation resistance:100M ohms Min(at 250VDC)
- 7.Dielectric withstanding voltage:250VAC for 1 minute
- 8.Operating temperature:-20°C~+70°C
- 9.Ambient humidity:75%RH Max
- 10.LED Rating:20mA 2.6V Max
- 11.Malfunction durability:10 to 55 Hz 0.75mm double amplitude during 2 hours
- 12.Solder ability:Solder bath:280° C Max 3 Seconds
Hand Soldering:280° C Max 3 Seconds

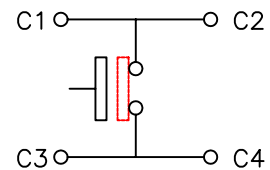
MATERIAL

- 1.Terminal:Brass plated Ag
- 2.Housing:Nylon
- 3.Movable blade:PBS plated Ag
- 4.Bottom:PBT
- 5.Cap:ABS

DIMENSIONS



CIRCUIT DIAGRAM



P.C.MOUNTING

